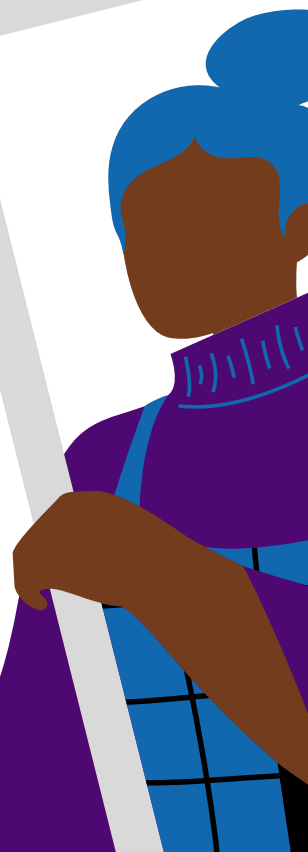
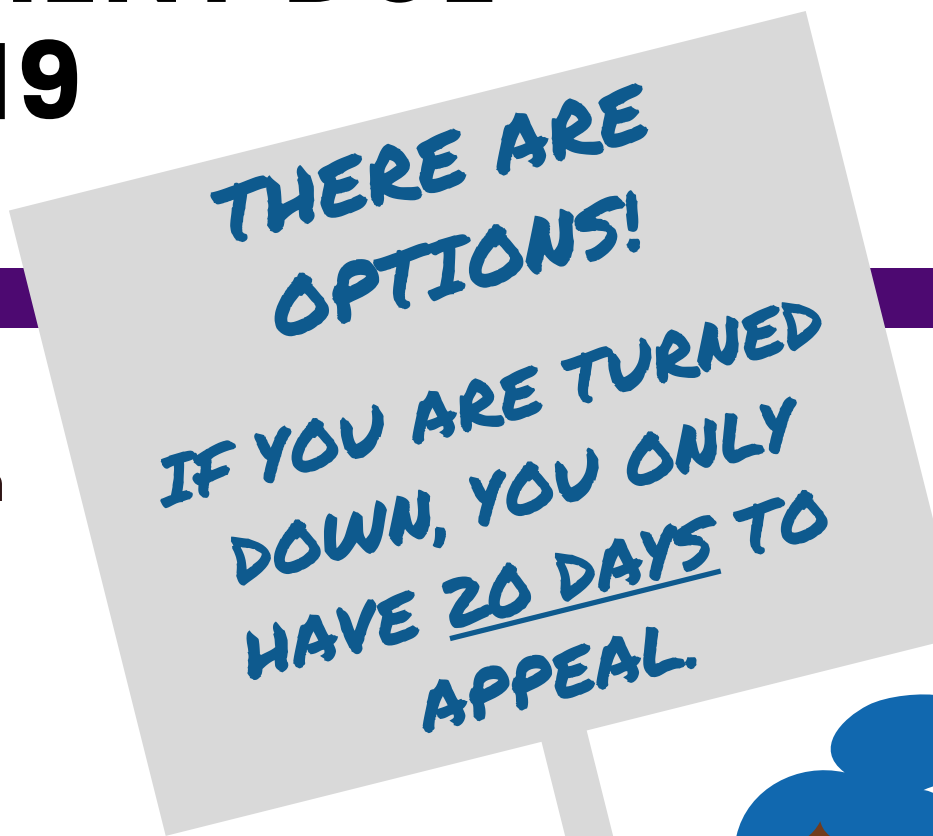


HAVE YOU FILED FOR UNEMPLOYMENT DUE TO COVID -19 AND...

...faced barriers in finishing your application for Unemployment (*Reemployment Assistance*)

...have not received the full amount of benefits you were eligible for

...Been denied, even though you lost your job because of COVID-19



APPLY
ONLINE
WWW.LSNF.ORG



850-385-9007
8:30 A.M. - 5:15 P.M.
(LOCAL TIME)
MONDAY - THURSDAY

FIND MORE INFO ABOUT FREE LEGAL HELP GO TO
WWW.LSNF.ORG OR CALL (850) 385-9007

HOW TO REACH LSNF



CALL US!

PHONES ARE OPEN
8:30 A.M. – 5:15 P.M.
(LOCAL TIME)
MONDAY – THURSDAY



GO ONLINE!

*OUR ONLINE INTAKE
IS NOW OPEN*

**FILL OUT AN
APPLICATION AT:
WWW.LSNF.ORG**



1

TALLAHASSEE OFFICE

Serving: Franklin, Jefferson, Leon, & Wakulla
Call 850-385-9007

2

QUINCY OFFICE

Serving: Calhoun, Gadsden, Jackson, & Liberty
Call 850-385-9007

3

PANAMA CITY OFFICE

Serving: Bay, Gulf, Holmes & Washington
Call 850-385-9007

4

FT. WALTON OFFICE

Serving: Okaloosa & Walton
Call 850-385-9007

5

PENSACOLA OFFICE

Serving: Escambia & Santa Rosa
Call 850-385-9007

CLERK OF COURTS BY COUNTY

Bay County
(850) 763-9061

Gadsden County
(850) 875-8601 ext. 224

Jefferson County
(850) 342-0218 ext. 232

Santa Rosa County
(850) 981-5554

Calhoun County
(850) 674-4545

Gulf County
(850) 229-6112

Leon County
(850) 606-4000

Wakulla County
(850) 926-0905

Escambia County
(850) 595-4310

Holmes County
(850) 547-1100

Liberty County
(850) 643-2215

Walton County
(850) 892-8115

Franklin County
(850) 653-8861 ext. 103

Jackson County
(850) 482-9552

Okaloosa County
(850) 689-5000 ext 4000

Washington County
(850) 638-6289

MORE LEGAL AID & OTHER RESOURCES

The American Bar Association's
Florida Legal Help Website
Florida.freelegalanswers.org

Senior Legal Helpline
(888) 895-7873

Florida Division of
Emergency Management
(850) 815-4000
www.floridadisaster.org

State Assistance Information Line
(800) 342-3557

Florida Veterans Legal Helpline
(866) 486-6161